


NOMADIC FIRE RETARDANT 100% COTTON COVERALL (FRC 220)



Fabric Fire Retardant 100% Cotton 220 GSM

Composition 100% Cotton

Available Colours Royal Blue 

Certifications and Standards Compliance EN 11612 - 2008 A1, A2 , B1 , C1, F1
EN 14116 : 2008



Uses Safety from Heat and Flame

Sizes S to 5XL

Garment Specification

- Two front chest pockets provided with flap closer with Metal Snap Button.
- Collar closer and front flap on waist closer with Metal snap button.
- Left arm with tool pocket.
- Two Back Pocket & Two side cross pocket .
- Front closer with 5 No.Two way Heavy Duty Metal zipper.
- Action pleat on back for easy movement. Back waist provided with Elastic.
- Sleeve Cuff and Bottom leg provided with adjustable velcro closer.
- 1 Inch normal certified EN 20471 Silver Reflective Tape.
- All stress points are bartack reinforced.

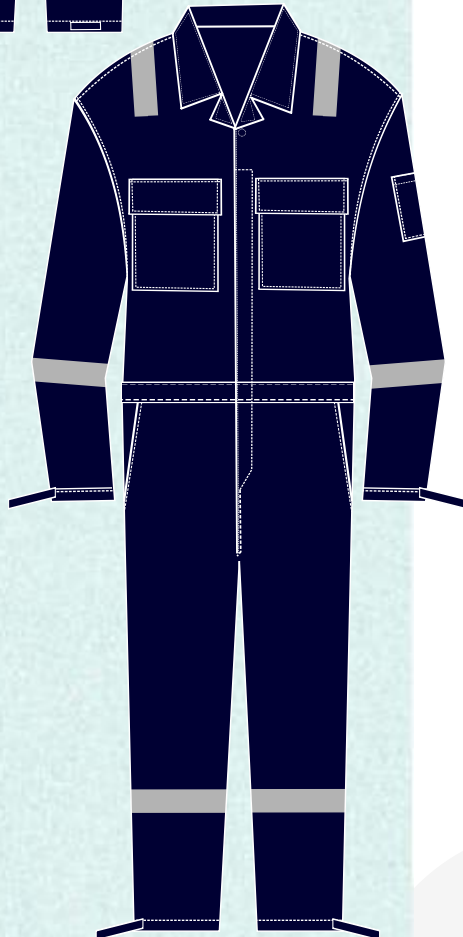
MEASUREMENT (All Dimensions in CM)

SIZE	S	M	L	XL	2XL	3XL	4XL	5XL
Length	152	158	160	163	164	165	165	167
Chest	116	120	124	128	132	142	152	156
Waist	108	112	116	120	124	132	136	140
Inseam	73	75	78	81	82	83	84	85
Sleeve Length	57	58	59	60	61	62	63	64
Shoulder	48	51	53	55	58	61	63	65
Bottom	43	43	46	48	48	51	51	52
Front Raise (from Collar Point)	70	72	73	74	75	76	77	78
Back Raise (from Centre Back)	90	92	93	94	95	96	97	98
Thai 1/2	33	34	35	36	37	38	39	40

Design Customization


Garments can be made according to the clients required design and specifications.

NOMADIC FIRE RETARDANT 100% COTTON COVERALL (FRC 220)



Fabric Fire Retardant 100% Cotton 220 GSM

Composition 100% Cotton

Available Colours Navy Blue 

Certifications and Standards Compliance EN 11612 - 2008 A1, A2 , B1 , C1, F1
EN 14116 : 2008



Uses Safety from Heat and Flame

Sizes S to 5XL

Garment Specification

- Two front chest pockets provided with flap closer with Metal Snap Button.
- Collar closer and front flap on waist closer with Metal snap button.
- Left arm with tool pocket.
- Two Back Pocket & Two side cross pocket .
- Front closer with 5 No.Two way Heavy Duty Metal zipper.
- Action pleat on back for easy movement. Back waist provided with Elastic.
- Sleeve Cuff and Bottom leg provided with adjustable velcro closer.
- 1 Inch normal certified EN 20471 Silver Reflective Tape.
- All stress points are bartack reinforced.

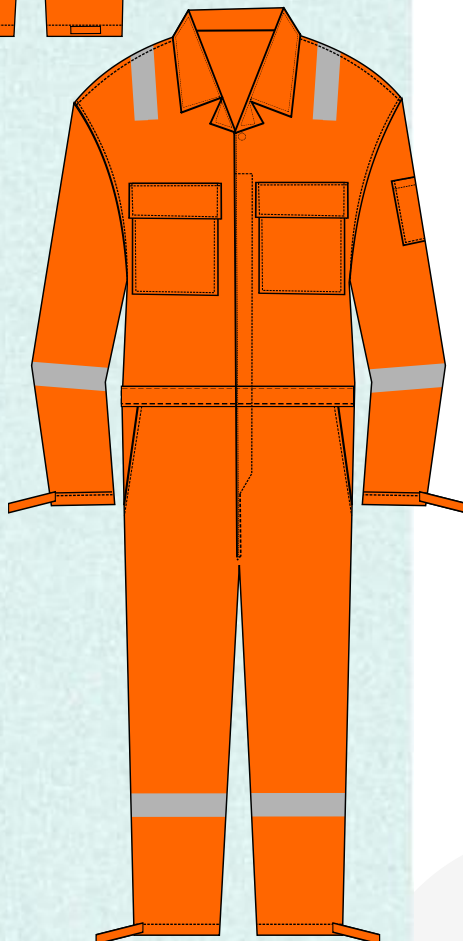
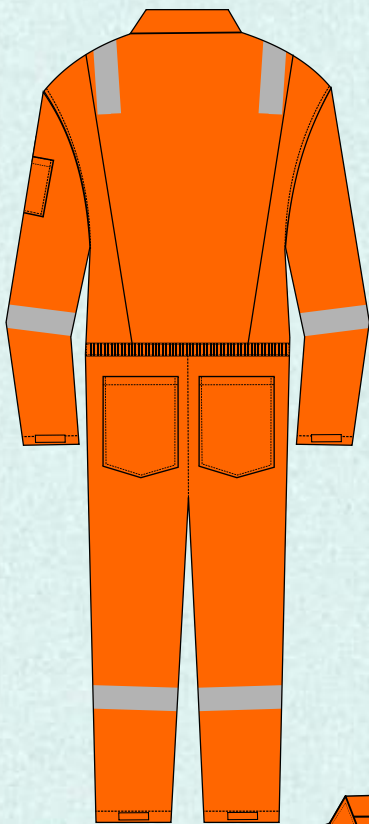
MEASUREMENT (All Dimensions in CM)

SIZE	S	M	L	XL	2XL	3XL	4XL	5XL
Length	152	158	160	163	164	165	165	167
Chest	116	120	124	128	132	142	152	156
Waist	108	112	116	120	124	132	136	140
Inseam	73	75	78	81	82	83	84	85
Sleeve Length	57	58	59	60	61	62	63	64
Shoulder	48	51	53	55	58	61	63	65
Bottom	43	43	46	48	48	51	51	52
Front Raise (from Collar Point)	70	72	73	74	75	76	77	78
Back Raise (from Centre Back)	90	92	93	94	95	96	97	98
Thai 1/2	33	34	35	36	37	38	39	40

Design Customization


Garments can be made according to the clients required design and specifications.

NOMADIC FIRE RETARDANT 100% COTTON COVERALL (FRC 220)



Fabric Fire Retardant 100% Cotton 220 GSM

Composition 100% Cotton

Available Colours Orange 

Certifications and Standards Compliance EN 11612 - 2008 A1, A2 , B1 , C1, F1
EN 14116 : 2008



Uses Safety from Heat and Flame

Sizes S to 5XL

Garment Specification

- Two front chest pockets provided with flap closer with Metal Snap Button.
- Collar closer and front flap on waist closer with Metal snap button.
- Left arm with tool pocket.
- Two Back Pocket & Two side cross pocket .
- Front closer with 5 No.Two way Heavy Duty Metal zipper.
- Action pleat on back for easy movement. Back waist provided with Elastic.
- Sleeve Cuff and Bottom leg provided with adjustable velcro closer.
- 1 Inch normal certified EN 20471 Silver Reflective Tape.
- All stress points are bartack reinforced.

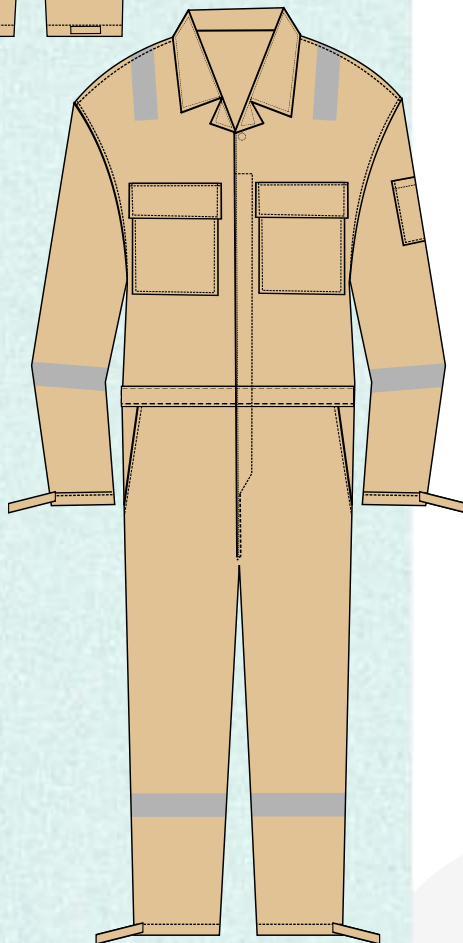
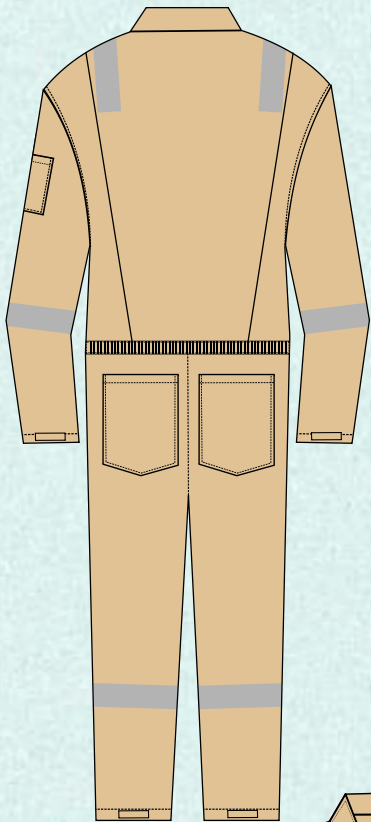
MEASUREMENT (All Dimensions in CM)

SIZE	S	M	L	XL	2XL	3XL	4XL	5XL
Length	152	158	160	163	164	165	165	167
Chest	116	120	124	128	132	142	152	156
Waist	108	112	116	120	124	132	136	140
Inseam	73	75	78	81	82	83	84	85
Sleeve Length	57	58	59	60	61	62	63	64
Shoulder	48	51	53	55	58	61	63	65
Bottom	43	43	46	48	48	51	51	52
Front Raise (from Collar Point)	70	72	73	74	75	76	77	78
Back Raise (from Centre Back)	90	92	93	94	95	96	97	98
Thai 1/2	33	34	35	36	37	38	39	40

Design Customization

Garments can be made according to the clients required design and specifications.

NOMADIC FIRE RETARDANT 100% COTTON COVERALL (FRC 220)



Fabric Fire Retardant 100% Cotton 220 GSM

Composition 100% Cotton

Available Colours Khaki 

Certifications and Standards Compliance EN 11612 - 2008 A1, A2 , B1 , C1, F1
EN 14116 : 2008



Uses Safety from Heat and Flame

Sizes S to 5XL

Garment Specification

- Two front chest pockets provided with flap closer with Metal Snap Button.
- Collar closer and front flap on waist closer with Metal snap button.
- Left arm with tool pocket.
- Two Back Pocket & Two side cross pocket .
- Front closer with 5 No.Two way Heavy Duty Metal zipper.
- Action pleat on back for easy movement. Back waist provided with Elastic.
- Sleeve Cuff and Bottom leg provided with adjustable velcro closer.
- 2 Inch normal certified EN 20471 Silver Reflective Tape.
- All stress points are bartack reinforced.

MEASUREMENT (All Dimensions in CM)

SIZE	S	M	L	XL	2XL	3XL	4XL	5XL
Length	152	158	160	163	164	165	165	167
Chest	116	120	124	128	132	142	152	156
Waist	108	112	116	120	124	132	136	140
Inseam	73	75	78	81	82	83	84	85
Sleeve Length	57	58	59	60	61	62	63	64
Shoulder	48	51	53	55	58	61	63	65
Bottom	43	43	46	48	48	51	51	52
Front Raise (from Collar Point)	70	72	73	74	75	76	77	78
Back Raise (from Centre Back)	90	92	93	94	95	96	97	98
Thai 1/2	33	34	35	36	37	38	39	40

Design Customization

Garments can be made according to the clients required design and specifications.