

# NOMADIC FIRE RETARDANT 100% COTTON COVERALL ( FRC 320 )



**Fabric** Fire Retardant 100% Cotton 320 GSM

**Composition** 100% Cotton

**Available Colours** Royal Blue 

**Certifications and Standards Compliance** EN 11612 - 2008 A1, A2 , B1 , C1, F1  
EN 11611 CLASS 1



**Uses** Safety from Heat and Flame

**Sizes** S to 5XL

### Garment Specification

- Two front chest pockets provided with flap closer with Metal Snap Button.
- Collar closer and front flap on waist closer with Metal snap button.
- Left arm with tool pocket.
- One Back Pocket provided with Flap closer with Velcro.
- Two side cross pocket and one back tool pocket on right leg.
- Front closer with 5 No. Two way Heavy Duty Metal zipper.
- Action pleat on back for easy movement. Back waist provided with Elastic.
- Sleeve Cuff and Bottom leg provided with adjustable velcro closer.
- 1 Inch normal certified EN 20471 Silver Reflective Tape.
- All stress points are bartack reinforced.

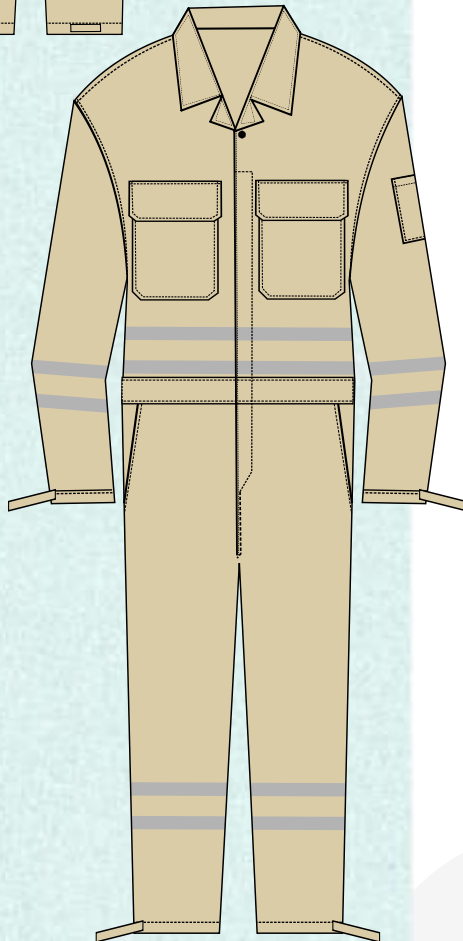
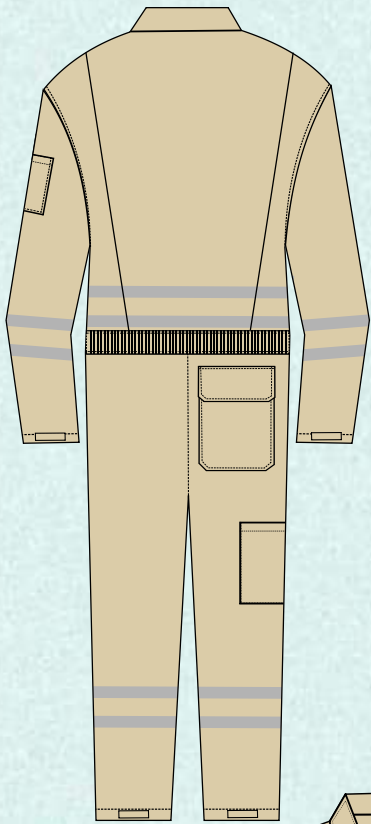
### MEASUREMENT ( All Dimensions in CM)

SIZE	S	M	L	XL	2XL	3XL	4XL	5XL
Length	152	158	160	163	164	165	165	167
Chest	116	120	124	128	132	142	152	156
Waist	108	112	116	120	124	132	136	140
Inseam	73	75	78	81	82	83	84	85
Sleeve Length	57	58	59	60	61	62	63	64
Shoulder	48	51	53	55	58	61	63	65
Bottom	43	43	46	48	48	51	51	52
Front Raise ( from Collar Point)	70	72	73	74	75	76	77	78
Back Raise ( from Centre Back )	90	92	93	94	95	96	97	98
Thai 1/2	33	34	35	36	37	38	39	40

### Design Customization

Garments can be made according to the clients required design and specifications.

# NOMADIC FIRE RETARDANT 100% COTTON COVERALL ( FRC 320 )



**Fabric** Fire Retardant 100% Cotton 320 GSM

**Composition** 100% Cotton

**Available Colours** Khaki 

**Certifications and Standards Compliance** EN 11612 - 2008 A1, A2 , B1 , C1, F1  
EN 11611 CLASS 1



**Uses** Safety from Heat and Flame

**Sizes** S to 5XL

## Garment Specification

- Two front chest pockets provided with flap closer with Metal Snap Button.
- Collar closer and front flap on waist closer with Metal snap button.
- Left arm with tool pocket.
- One Back Pocket provided with Flap closer with Velcro.
- Two side cross pocket and one back tool pocket on right leg.
- Front closer with 5 No. Two way Heavy Duty Metal zipper.
- Action pleat on back for easy movement. Back waist provided with Elastic.
- Sleeve Cuff and Bottom leg provided with adjustable velcro closer.
- 1 Inch normal certified EN 20471 Silver Reflective Tape.
- All stress points are bartack reinforced.

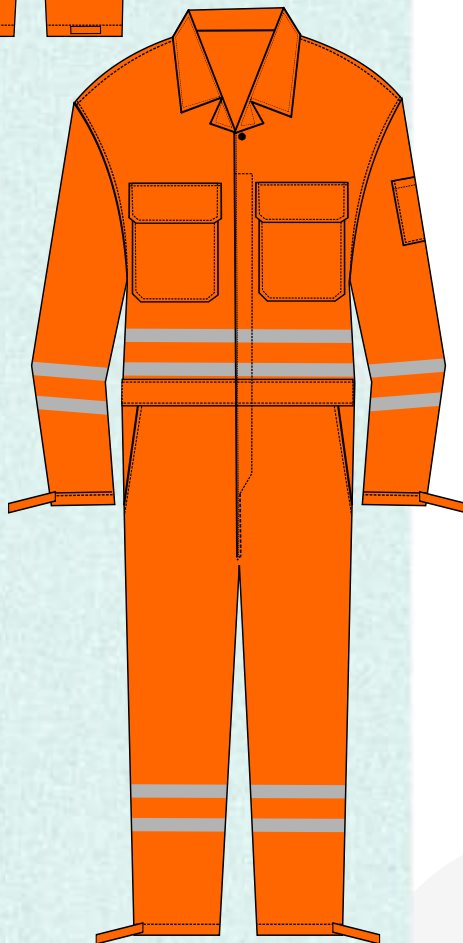
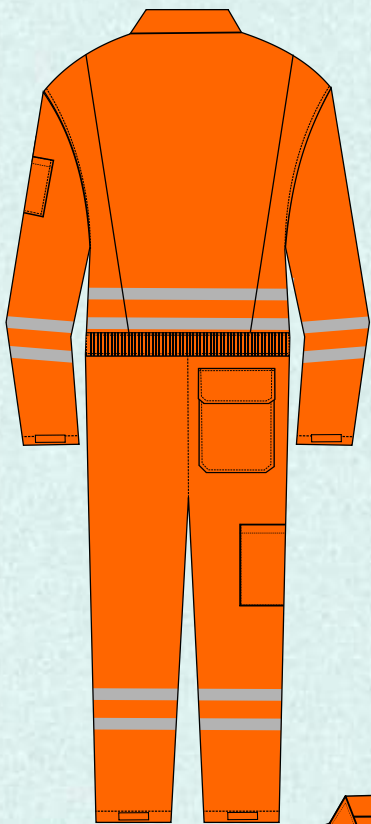
## MEASUREMENT ( All Dimensions in CM)

SIZE	S	M	L	XL	2XL	3XL	4XL	5XL
Length	152	158	160	163	164	165	165	167
Chest	116	120	124	128	132	142	152	156
Waist	108	112	116	120	124	132	136	140
Inseam	73	75	78	81	82	83	84	85
Sleeve Length	57	58	59	60	61	62	63	64
Shoulder	48	51	53	55	58	61	63	65
Bottom	43	43	46	48	48	51	51	52
Front Raise ( from Collar Point)	70	72	73	74	75	76	77	78
Back Raise ( from Centre Back )	90	92	93	94	95	96	97	98
Thai 1/2	33	34	35	36	37	38	39	40

## Design Customization

Garments can be made according to the clients required design and specifications.

# NOMADIC FIRE RETARDANT 100% COTTON COVERALL ( FRC 320 )



**Fabric** Fire Retardant 100% Cotton 320 GSM

**Composition** 100% Cotton

**Available Colours** Orange 

**Certifications and Standards Compliance** EN 11612 - 2008 A1, A2 , B1 , C1, F1  
EN 11611 CLASS 1



**Uses** Safety from Heat and Flame

**Sizes** S to 5XL

## Garment Specification

- Two front chest pockets provided with flap closer with Metal Snap Button.
- Collar closer and front flap on waist closer with Metal snap button.
- Left arm with tool pocket.
- One Back Pocket provided with Flap closer with Velcro.
- Two side cross pocket and one back tool pocket on right leg.
- Front closer with 5 No. Two way Heavy Duty Metal zipper.
- Action pleat on back for easy movement. Back waist provided with Elastic.
- Sleeve Cuff and Bottom leg provided with adjustable velcro closer.
- 1 Inch normal certified EN 20471 Silver Reflective Tape.
- All stress points are bartack reinforced.

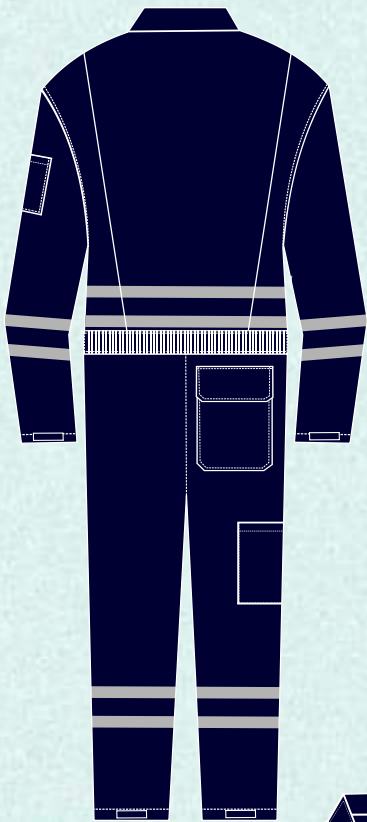
## MEASUREMENT ( All Dimensions in CM)

SIZE	S	M	L	XL	2XL	3XL	4XL	5XL
Length	152	158	160	163	164	165	165	167
Chest	116	120	124	128	132	142	152	156
Waist	108	112	116	120	124	132	136	140
Inseam	73	75	78	81	82	83	84	85
Sleeve Length	57	58	59	60	61	62	63	64
Shoulder	48	51	53	55	58	61	63	65
Bottom	43	43	46	48	48	51	51	52
Front Raise ( from Collar Point)	70	72	73	74	75	76	77	78
Back Raise ( from Centre Back )	90	92	93	94	95	96	97	98
Thai 1/2	33	34	35	36	37	38	39	40

## Design Customization

Garments can be made according to the clients required design and specifications.

# NOMADIC FIRE RETARDANT 100% COTTON COVERALL ( FRC 320 )



**Fabric** Fire Retardant 100% Cotton 320 GSM

**Composition** 100% Cotton

**Available Colours** Navy Blue 

**Certifications and Standards Compliance** EN 11612 - 2008 A1, A2 , B1 , C1, F1  
EN 11611 CLASS 1



**Uses** Safety from Heat and Flame

**Sizes** S to 5XL

### Garment Specification

- Two front chest pockets provided with flap closer with Metal Snap Button.
- Collar closer and front flap on waist closer with Metal snap button.
- Left arm with tool pocket.
- One Back Pocket provided with Flap closer with Velcro.
- Two side cross pocket and one back tool pocket on right leg.
- Front closer with 5 No. Two way Heavy Duty Metal zipper.
- Action pleat on back for easy movement. Back waist provided with Elastic.
- Sleeve Cuff and Bottom leg provided with adjustable velcro closer.
- 1 Inch normal certified EN 20471 Silver Reflective Tape.
- All stress points are bartack reinforced.

### MEASUREMENT ( All Dimensions in CM)

SIZE	S	M	L	XL	2XL	3XL	4XL	5XL
Length	152	158	160	163	164	165	165	167
Chest	116	120	124	128	132	142	152	156
Waist	108	112	116	120	124	132	136	140
Inseam	73	75	78	81	82	83	84	85
Sleeve Length	57	58	59	60	61	62	63	64
Shoulder	48	51	53	55	58	61	63	65
Bottom	43	43	46	48	48	51	51	52
Front Raise ( from Collar Point)	70	72	73	74	75	76	77	78
Back Raise ( from Centre Back )	90	92	93	94	95	96	97	98
Thai 1/2	33	34	35	36	37	38	39	40

### Design Customization

Garments can be made according to the clients required design and specifications.